

SONY
Portable MiniDisc Player

Operating Instructions



Printed on 100% recycled paper using VOC (Volatile Organic Compound)-free vegetable oil based ink.

WARNING

To prevent fire or shock hazard, do not expose the unit to rain or moisture.

Do not install the appliance in a confined space, such as a brookcase or built-in cabinet.

To prevent fire, do not cover the ventilation of the apparatus with newspapers, table-cloths, curtains, etc. And don't place lighted candles on the apparatus.

To prevent fire or shock hazard, do not place objects filled with liquids, such as vases, on the apparatus.

Certain situations may require disposal of the battery used to power this product. Please consult with your local authority.

Caution

The use of optical instruments with this product will increase eye hazard.

CAUTION — INVISIBLE LASER RADIATION WHEN OPEN

DO NOT STARE INTO BEAM OR VIEW DIRECTLY WITH OPTICAL INSTRUMENTS

Information

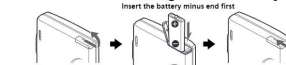
IN NO EVENT SHALL SELLER BE LIABLE FOR ANY DIRECT, INCIDENTAL OR CONSEQUENTIAL DAMAGES OF ANY NATURE, OR LOSSES OR EXPENSES RESULTING FROM ANY DEFECTIVE PRODUCT OR THE USE OF ANY PRODUCT.

3-238-528-12(1)

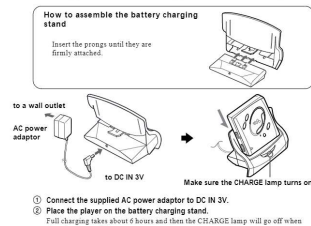
Getting started

Charge the supplied rechargeable battery before using it for the first time.

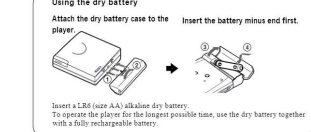
1 Insert the rechargeable battery.



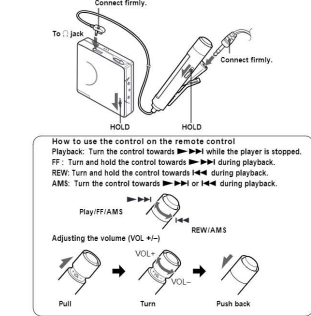
2 Charge the rechargeable battery.



- 1 Connect the supplied AC power adaptor to DC IN 3V.
- 2 Place the player on the battery charging stand.

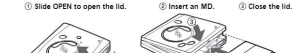


3 Make connections and unlock the HOLD control.



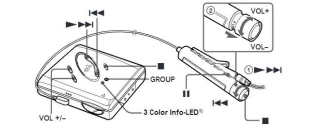
Playing an MD

1 Insert an MD.



Insert an MD with the label side facing up, pushing the MD to the direction of the arrow in the illustration.

2 Play an MD.



- 1 Turn the control towards [REPEAT] on the remote control (press [REPEAT] on the player) to play the disc.
- 2 Pull and turn VOL +/- on the remote control (or press VOL +/- on the player) to adjust the volume.
- 3 Turn the control towards [STOP] on the remote control (or press [STOP] on the player) to stop the disc.

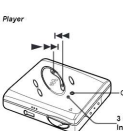
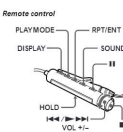
LED color	Operating status
Red	Normal play (The LED lights up continuously)
Green	Group mode* (The LED lights up continuously)
Orange	Group skip mode* (The LED lights for about 3 seconds)

*When recording the disc, make sure to press [GROUP] and then slide OPEN.

Viewing the display window of the remote control



Various ways of playback



Repeating play

You can use this function to repeat playback in normal play, single play, shuffle play, or program play mode.

- 1 Press RPT. ENT on the remote control during playback.

"C" appears in the display.

Searching for a specific track or a position quickly (Quick Search)

You can do two kinds of quick searches.

- Index search — Searching quickly while monitoring the track number or track name (library settings).
- Time search — Searching quickly while monitoring the elapsed time.

This procedure can be done by the remote control.

- 1 During playback, press DISPLAY for 2 seconds or more.
- 2 Turn the control repeatedly until "SEARCH" flashes in the display, and press [ENTER].
- 3 Turn the control repeatedly until "Index" (index search) or "Time" (time search) flashes in the display, and press [ENTER].
- 4 Press [ENTER] to pause.
- 5 Turn and hold the control until the desired track number / track name (index search) or the desired elapsed time (time search) appears in the display.
- 6 Press [ENTER] to cancel the pause.

*If you do this procedure while the player is in shuffle play mode, shuffle play starts from the track that you entered.

*If the player reaches to the first track or the last track on the disc as you are tuning the control in step 5, it will return to the last track or the first track, respectively.

*If the player reaches to the first track or the last track in a group as you are tuning the control in step 5, it will return to the last track or the first track in that group, respectively (see "Using the group function").

Listening to tracks in a desired sequence (Program Play)

- 1 During playback, press PLAYMODE repeatedly until "PGM" flashes in the display.
- 2 Turn the control repeatedly to select a track number.
- 3 Press RPT. ENT on the remote control. The track is entered.
- 4 Repeat steps 2 and 3 to select other tracks in the desired sequence.
- 5 Hold down RPT. ENT for 2 seconds or more. The settings are entered and playback starts from the first programmed track.

*The program play settings will remain in memory even after playback finishes or is stopped.

*You can set the program play up to 30 tracks.

Notes

- * All program settings are lost when the lid is opened.
- * If no settings are made for 3 minutes while the player is stopped, the settings made up to that point are entered.
- * If you have no group mode during program play, the program play is canceled.

Using the group function

The MZ-E505 can be used with a disc which has group settings.

The group function is useful for playing a great number of tracks, or tracks that have been recorded in MZEP, L2P, L2P+ mode.

What is a disc with group settings?

This is a disc with settings that organize tracks into groups, and which allow those groups to be selected.

The MZ-E505 does not support the recording of group settings. Use your MD recorder to record group information, and then use the MZ-E505 for playback.

When group mode is on:

When group mode is off:

When group mode is on:

When group mode is off:

When group mode is on:

When group mode is off:

When group mode is on:

When group mode is off:

When group mode is on:

When group mode is off:

When group mode is on:

When group mode is off:

When group mode is on:

When group mode is off:

When group mode is on:

When group mode is off:

When group mode is on:

When group mode is off:

When group mode is on:

When group mode is off:

When group mode is on:

When group mode is off:

When group mode is on:

When group mode is off:

When group mode is on:

When group mode is off:

When group mode is on:

When group mode is off:

When group mode is on:

When group mode is off:

When group mode is on:

When group mode is off:

When group mode is on:

When group mode is off:

When group mode is on:

When group mode is off:

When group mode is on:

When group mode is off:

When group mode is on:

Selecting and playing specific tracks (Group Skip Function)

When playing a disc with group settings, the group skip function allows you to jump from the currently playing group to any other group on the MD. The group skip function can be used even though the player is not in group mode.

When group mode is on:

When group mode is off:

When group mode is on:

When group mode is off:

When group mode is on:

When group mode is off:

When group mode is on:

When group mode is off:

When group mode is on:

When group mode is off:

When group mode is on:

When group mode is off:

When group mode is on:

When group mode is off:

When group mode is on:

When group mode is off:

When group mode is on:

When group mode is off:

When group mode is on:

When group mode is off:

When group mode is on:

When group mode is off:

When group mode is on:

When group mode is off:

When group mode is on:

When group mode is off:

When group mode is on:

When group mode is off:

When group mode is on:

When group mode is off:

When group mode is on:

When group mode is off:

When group mode is on:

When group mode is off:

When group mode is on:

When group mode is off:

When group mode is on:

When group mode is off:

When group mode is on:

When group mode is off:

When group mode is on:

When group mode is off:

When group mode is on:

When group mode is off:

When group mode is on:

When group mode is off:

Note

In group mode, the player treats all tracks without group settings as belonging to the last group on the disc. The last group is indicated in the display on the player as "Group ---". Within a group, the tracks appear in their order on the disc, not their order within the group.

What is a disc with group settings?

This is a disc with settings that organize tracks into groups, and which allow those groups to be selected.

The MZ-E505 does not support the recording of group settings. Use your MD recorder to record group information, and then use the MZ-E505 for playback.

When group mode is on:

When group mode is off:

When group mode is on:

When group mode is off:

When group mode is on:

When group mode is off:

When group mode is on:

When group mode is off:

When group mode is on:

When group mode is off:

When group mode is on:

When group mode is off:

When group mode is on:

When group mode is off:

When group mode is on:

When group mode is off:

When group mode is on:

When group mode is off:

When group mode is on:

When group mode is off:

When group mode is on:

When group mode is off:

When group mode is on:

When group mode is off:

When group mode is on:

When group mode is off:

When group mode is on:

When group mode is off:

When group mode is on:

When group mode is off:

When group mode is on:

When group mode is off:

When group mode is on:

When group mode is off:

When group mode is on:

When group mode is off:

When group mode is on:

When group mode is off:

When group mode is on:

When group mode is off:

When group mode is on:

When group mode is off:

Disc name

Track number

Group name

Separate between group names

Separate between track number and group name

(Ex) Set the following groups for the disc named "Collections"

Group name for tracks 1-5:

Group name for tracks 6-17:

Group name for tracks 18-24:

Group name for tracks 25-32:

Group name for tracks 33-40:

Group name for tracks 41-48:

Group name for tracks 49-56:

Group name for tracks 57-64:

Group name for tracks 65-72:

Group name for tracks 73-80:

Group name for tracks 81-88:

Group name for tracks 89-96:

Group name for tracks 97-104:

Group name for tracks 105-112:

Group name for tracks 113-120:

Group name for tracks 121-128:

Group name for tracks 129-136:

Group name for tracks 137-144:

Group name for tracks 145-152:

Group name for tracks 153-160:

Group name for tracks 161-168:

Group name for tracks 169-176:

Group name for tracks 177-184:

Group name for tracks 185-192:

Group name for tracks 193-200:

Group name for tracks 201-208:

Group name for tracks 209-216:

Group name for tracks 217-224:

Group name for tracks 225-232:

Group name for tracks 233-240:

Group name for tracks 241-248:

Group name for tracks 249-256:

Group name for tracks 257-264:

Group name for tracks 265-272:

Group name for tracks 273-280:

Group name for tracks 281-288:

Group name for tracks 289-296:

Group name for tracks 297-304:

Group name for tracks 305-312:

Group name for tracks 313-320:

Group name for tracks 321-328:

Group name for tracks 329-336:

Group name for tracks 337-344:

Group name for tracks 345-352:

Group name for tracks 353-360:

Group name for tracks 361-368:

Group name for tracks 369-376:

Group name for tracks 377-384:

Group name for tracks 385-392:

Group name for tracks 393-400:

Group name for tracks 401-408:

Group name for tracks 409-416:

Group name for tracks 417-424:

Group name for tracks 425-432:

Group name for tracks 433-440:

Group name for tracks 441-448:

Group name for tracks 449-456:

Group name for tracks 457-464:

Group name for tracks 465-472:

Group name for tracks 473-480:

Group name for tracks 481-488:

Group name for tracks 489-496:

Group name for tracks 497-504:

Group name for tracks 505-512:

Group name for tracks 513-520:

Group name for tracks 521-528:

Group name for tracks 529-536:

Group name for tracks 537-544:

Group name for tracks 545-552:

Group name for tracks 553-560:

Group name for tracks 561-568:

Group name for tracks 569-576:

